

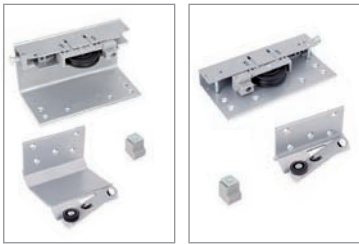
Space+

- ✓ Available for 18 - 19- 23 - 30 - 50 mm door
- ✓ Max. 85 kg door
- ✓ Adjustment ± 4 mm
- ✓ Soft close available, integrated in the track
- ✓ Hidden top and base track "top desing concept"
- ✓ Full frame door available
- ✓ Aluminium full frame door: no predrilling requires just 90° cut and fit
- ✓ Easy to fit and adjust



18mm · BOARD DOOR

Upper and lower sliding set



Exterior door
x 2

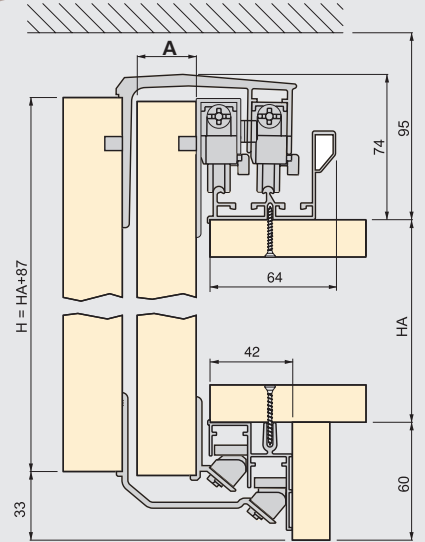
Interior door
x 2

Set of sliding sets	A Max.	Cod.		
Interior door	-	60217	20	1
Exterior door	23	60218	20	1

Steel, aluminium and plastic



3m track kit for Space +
Cod. 4005261



SOFT



x n

Brake set for cupboards with soft-closing

	Doors	n	Cod.		
50 Kg	2	4	60223	20	1
	3	6	60224	20	1
85 Kg	2	4	60226	20	1
	3	6	60227	20	1

Steel and plastic

non
SOFT



x 4

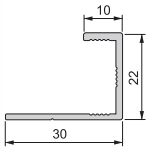
Brake set for cupboards

Cod.

60225	20	1
-------	----	---

Steel and plastic

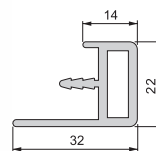
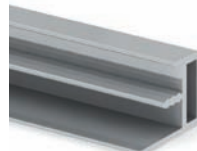
18mm board mat aluminium profiles



Adige vertical profile

	Cod.		
2,8 m	70134	62	28 m

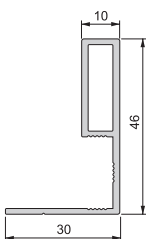
Aluminium



Brenta vertical profile

	Cod.		
2,8 m	70137	62	28 m

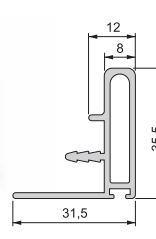
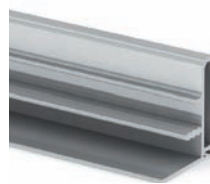
Aluminium



Adige handle profile

	Cod.		
2,8 m	70132	62	28 m

Aluminium



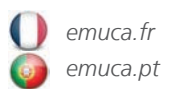
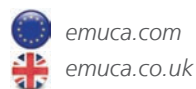
Brenta handle profile

	Cod.		
2,8 m	70135	62	28 m

Aluminium

- ✓ 19mm profiles available.
- ✓ 23 / 30 / 35 / 50 rollers available.

... Check website www.emuca.co.uk

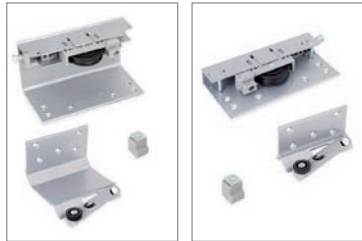


Space+

4mm glass / 10mm board FULL FRAME DOOR



Upper and lower sliding set



Exterior door
x 2

Interior door
x 2

Set of sliding sets	A Max.	Cod.		
Interior door	-	60217	20	1
Exterior door	30	60219	20	1

Steel, aluminium and plastic



3m track kit for Space +
Cod. **4005261**

SOFT



x n

Brake set for cupboards with soft-closing

	Doors	n	Cod.		
50 Kg	2	4	60223	20	1
	3	6	60224	20	1
85 Kg	2	4	60226	20	1
	3	6	60227	20	1

Steel and plastic

non SOFT



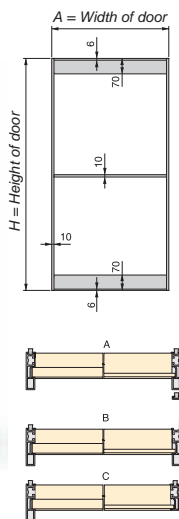
x 4

Brake set for cupboards

Cod.		
60225	20	1

Steel and plastic

Mat aluminium profiles



Vertical profiles for 1 door:

H	Door	Cod.		
2.500	A	69086	62	1
2.500	B	69087	62	1
2.500	C	69088	62	1
2.900	A	58842	62	1
2.900	B	58843	62	1
2.900	C	58844	62	1

Aluminium

Horizontal profiles for 1 door:

A	Description	Cod.		
1.200	Upper and bottom	69089	62	1
1.600	Upper and bottom	69090	62	1
1.200	Cross profile	69091	62	2
1.600	Cross profile	69092	62	2

Aluminium

How to calculate the door

	2 doors wardrobe	3 doors wardrobe
A	$\frac{Aa + 8}{2}$	$\frac{Aa + 18}{3}$

Space +	
H	Ha + 87

Ha = total height of the wardrobe

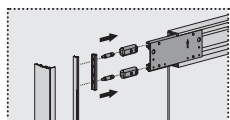
How to calculate the glass or chipboard		
	Glass-4 / Board-11	Board-10
Width	A - 14	A - 13
Height	$\frac{H - 5,5 - (4 \times N)}{N + 1}$	$\frac{H - 4,5 - (3 \times N)}{N + 1}$

N = number of cross-pieces

How to calculate the profiles: Vertical = H
Horizontal = A - 20mm

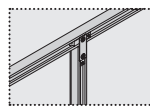


Fittings for one Free door



N° of cross crosspieces	Cod.		
1	70168	20	1
2	70169	20	1
3	70170	20	1

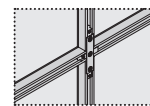
T link for Free crosspieces



Cod.		
61006	20	1

Steel and zamak

+ link for Free crosspieces



Cod.		
61007	20	1

Steel and zamak