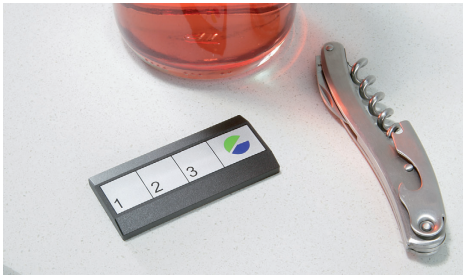
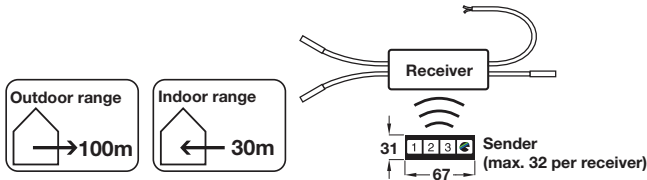


Remote sender/receiver set



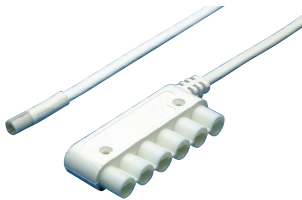
- > Ideal for retrofitting
- > Remote dims: 67 x 31 mm
- > Set consists of black plastic remote control sender and white plastic 240V receiver with 3.0 m bare ended mains lead and 3 interconnecting leads, 400 mm with female connectors
- > 3 radio channels for controlling up to three different light systems
- > Remote control sender is battery powered (type CR 2032-3V) - batteries included
- > Order qty: 1 set



> Order separately for use with 240V lights shown on pages 142-145

	Cat. No.
Remote sender/receiver	825.73.720

LED distributor with extension lead

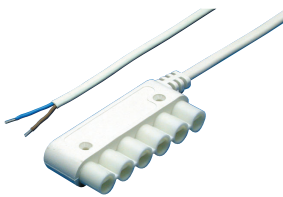


- > 6-way distributor with 2.0 m white plastic extension lead with connector for use with remote sender/receiver set
- > Order qty: 1 pc



Distributor	Cat. No.
6-way	826.29.710

LED 240V distributor



- > 6-way distributor with 3.0 m bare ended white mains lead, white plastic
- > Order qty: 1 pc



> Mains plug is not included and must be fitted by a qualified electrician

Distributor	Cat. No.
6-way	826.29.700

Replacement LED bulb, 2.5W



- > For use with lights on pages 144-145
- > 240V/2.5W LED
- > Order qty: 1 pc



LED colour	Cool white	Warm white
Cat. No.	830.79.690	826.16.993