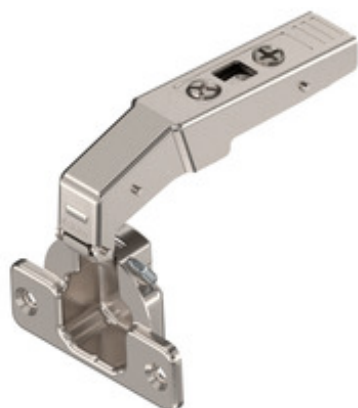


Product details

CLIP top blind corner hinge 95°, inset, unsprung, boss: screw-on



Part number	78T9550.TL
Item number	07655553
Colour / finish	Nickel plated
Packaging quantity	50 / 250
Weight per 10,000 Pcs in kg	819.79
EAN code	9002617694086
UPC code	

Technical attributes

Attribute	Value
application	blind corner hinge
Opening angle	95
Closing mechanism	unsprung
hinge variant	Special exterior lever
hinge variant	with free movement for TIP-ON
Cover cap type	90M2503
Cover cap type	70.1503
Boss material	Steel boss
boss finish	Nickel plated
Boss assembly	screw-on
Flange width	57
Flange length	20
Flange height	3.2
diametre hinge boss drilling	35
distance between drillings	45
excentric position of fixing holes to hinge boss hole	9.5
boss drilling depth	12.3
Minimum drilling distance	3
Maximum drilling distance	7
arm material	Steel
arm finish	Nickel plated
collision measurement (hinge arm height)	21
Fixed dimension / factory setting	-8
Type of side adjustment	With screw
Side adjustment	+/- 2.5 mm
Type of depth adjustment	convenient with spiral screw
Depth adjustment	+/- 1 mm
Gap	3
Item package	1 piece
packaging	Commercial packing