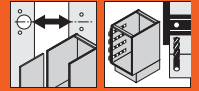
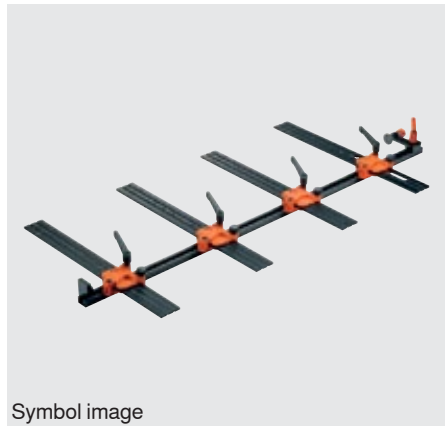


# Assembly devices



## ► Templates, jigs and assembly devices

### Universal drilling template



Symbol image

- Template for pre-drilling the fixing positions for cabinet profiles, lift mechanisms, mounting and adapter plates
- The template can be used with assembled and unassembled cabinets
- Setting the height and depth position using the calibration
- Suitable for overlay and inset applications
- For system and chipboard screws
- Assembly on marking line possible
- Material: nylon/steel/aluminium/zinc

#### Web-Link

[assemblydevices.blum.com](http://assemblydevices.blum.com)

#### Assembly possibilities

AVENTOS  
CLIP top BLUMOTION/CLIP top  
MODUL  
TANDEMBOX intivo  
TANDEMBOX antaro  
TANDEMBOX plus  
METABOX  
MOVENTO  
TANDEM  
STANDARD


#### Order information


	Part no.
Universal drilling template	65.1000.01


#### Composed of:

Extension rail 1000 mm	1 x
Universal drilling template	4 x
Drilling depth spacer Ø 5 mm	1 x
Reducing bush Ø 5 to Ø 2.5 mm	1 x
Allen key	1 x

#### a Accessories

	Extension rail 2200 mm	Part no. 65.7590
---	---------------------------	---------------------

	Add-on for SPACE CORNER	Part no. 65.1106
---	----------------------------	---------------------

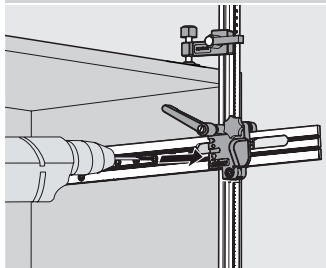
	Universal drilling template	Part no. 65.1001.01
---	--------------------------------	------------------------

#### Page instructions

Overview – templates, jigs and assembly devices **609**

#### Assembly possibilities

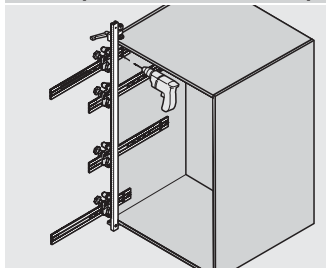
##### AVENTOS



#### Cabinet assembly

- Set template height and depth position using the calibration
- Pre-drill fixing positions for lift mechanism pegs

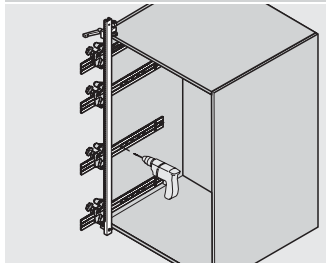
##### CLIP top BLUMOTION/CLIP top/MODUL



#### Hinge system assembly

- Set template height and depth position using the calibration
- Position template on cabinet
- Pre-drill fixing positions for mounting and adapter plates (BLUMOTION/TIP-ON for doors)

##### TANDEMBOX intivo/TANDEMBOX antaro/TANDEMBOX plus/METABOX/MOVENTO/TANDEM/STANDARD



#### Cabinet assembly

- Set template height and depth position using the calibration
- Position template on cabinet
- Pre-drill fixing positions for cabinet profiles
- Pre-drill fixing positions for BLUMOTION for METABOX
- The additional part (65.1106) enables SPACE CORNER assembly