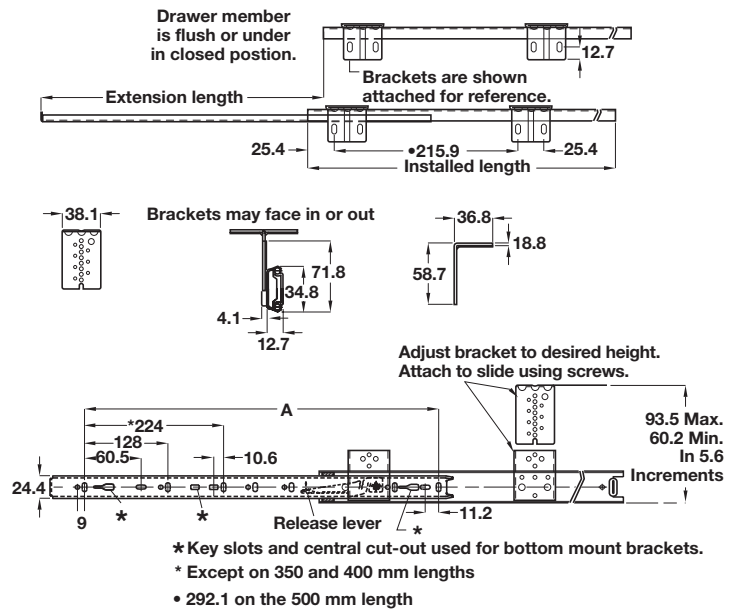
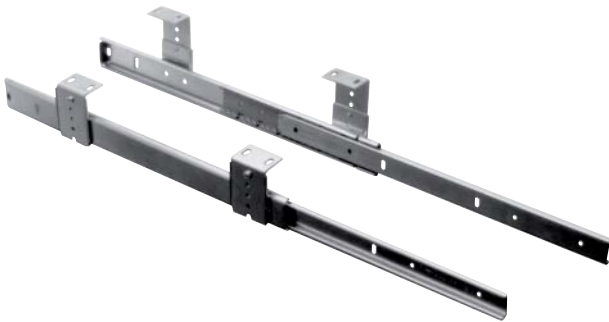


Accuride 2109, keyboard shelf runner, single extension



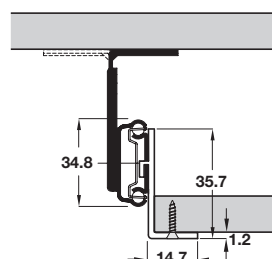
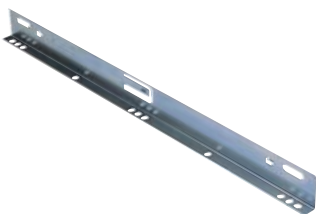
- > For computer keyboard, printer shelf and pencil drawer applications
- > Load carrying capacity up to 35 kg (see below for individual runner capacity)
- > Height adjustable brackets included
- > Front disconnect
- > Hold-in and hold-out
- > Optional clip-on bracket for bottom mounting (see table for ordering information)
- > Bright zinc-plated steel
- > Order qty: 1 kit

Ordering information		
Installed length	Runner Cat. No.	Mounting bracket Cat. No.
400 mm	422.14.940	422.42.940
400 mm	422.14.340	422.42.340
450 mm	422.14.945	422.42.945
500 mm	422.14.950	422.42.950



Installed length 1	Extension length 2	Load capacity	Dim. A	Bright	Black
350 mm	260 mm	35 kg	292 mm	422.14.935	-
400 mm	281 mm	30 kg	342 mm	422.14.940	422.14.340
450 mm	331 mm	30 kg	392 mm	422.14.945	-
500 mm	376 mm	25 kg	442 mm	422.14.950	-

Mounting brackets



- > Carrying capacity as per runner
- > Optional full length right-angle bracket
- > Easily clips onto runner
- > For bottom mounting of drawers or, when inverted, for platform mounting of shelves
- > Bright or black zinc-plated steel
- > Order qty: 1 pair

To suit runner length	Bright	Black
400 mm	422.42.940	422.42.340
450 mm	422.42.945	422.42.345
500 mm	422.42.950	422.42.350