



CAPACITY/DOOR : 400 kg max.


TRACK : 9010-9030-9040

MOTION : STRAIGHT

- Tracks, hangers and accessories made of 100% stainless steel
- 2 different qualities of stainless steel
 - 304 L - A2 : for food industry ...
 - 316 L - A4 : for highly aggressive or corrosive environment, sea environment...

FOR DOORS UP TO 60 KG		Track 9010X	
Item Nr	Fig.	Description	
STEEL 304 L	STEEL 316 L		
9010 XA2/6	9010 XA4/6	1 Track 9010 in STAINLESS STEEL. 6 m. long	
9011 XA2	9011 XA4	5 Adjustable bracket for track 9010 X	
9013 XA2	9013 XA4	3 STAINLESS STEEL angle plate - Screwing type	
9018 XA2	9018 XA4	7 STAINLESS STEEL bracket - Welding type	
9018 HXA2	9018 HXA4	4 STAINLESS STEEL bracket. Soffit fixing	
9018 VXA2	9018 VXA4	2 STAINLESS STEEL bracket. Wall fixing	
9011 MXA2	9011 MXA4	6 STAINLESS STEEL jointing bracket	
9118 XA2	9118 XA4	13 STAINLESS STEEL stop	
99212 XA2	99212 XA4	9 STAINLESS STEEL hanger with Delrin wheels on smooth axle, fixing screw Ø M 10	
36XA2	36 XA4	10 STAINLESS STEEL plate (hole M 10)	
1110 XA2/6	1110 XA4/6	14 STAINLESS STEEL U-profile 30x30. 6 M long	
1110 GN		15 Nylon guide for U-profile 30x30	

FOR DOORS UP TO 200 KG		Track 9030X	
Item Nr	Fig.	Description	
STEEL 304 L	STEEL 316 L		
9030 XA2/6	9030 XA4/6	1 Track 9030 in STAINLESS STEEL. 6 m. long	
9031 XA2	9031 XA4	5 Adjustable bracket for track 9030 X	
9033 XA2	9033 XA4	3 STAINLESS STEEL angle plate - Screwing type	
9038 XA2	9038 XA4	7 STAINLESS STEEL bracket - Welding type	
9038 HXA2	9038 HXA4	4 STAINLESS STEEL bracket. Soffit fixing	
9038 VXA2	9038 VXA4	2 STAINLESS STEEL bracket. Wall fixing	
9031 MXA2	9031 MXA4	6 STAINLESS STEEL jointing bracket	
9139 XA2	9139 XA4	12 STAINLESS STEEL stop	
99232 XA2	99232 XA4	9 STAINLESS STEEL hanger with Delrin wheels on smooth axle, fixing screw Ø M 12) For doors up to 100 kg .	
9232 XSA2	9232 XSA4	8 STAINLESS STEEL hanger (with stainless steel wheels mounted on ball bearings, fixing bolt Ø M 12) - For doors up to 200 kg .	
56 XA2	56 XA4	10 STAINLESS STEEL plate (hole M 12)	
1110 XA2/6	1110 XA4/6	14 STAINLESS STEEL U-profile 30x30. 6 M long	
1110 GN		15 Nylon guide for U-profile 30x30	

FOR DOORS UP TO 400 KG		Track 9040X	
Item Nr	Fig.	Description	
STEEL 304 L	STEEL 316 L		
9040 XA2/6	9040 XA4/6	1 Track 9040 in STAINLESS STEEL. 6 m. long	
9041 XA2	9041 XA4	5 Adjustable bracket for track 9040 X	
9043 XA2	9043 XA4	3 STAINLESS STEEL angle plate - Screwing type	
9048 XA2	9048 XA4	7 STAINLESS STEEL bracket - Welding type	
9048 HXA2	9048 HXA4	4 STAINLESS STEEL bracket. Soffit fixing	
9048 VXA2	9048 VXA4	2 STAINLESS STEEL bracket. Wall fixing	
9041 MXA2	9041 MXA4	6 STAINLESS STEEL jointing bracket	
9149 XA2	9149 XA4	12 STAINLESS STEEL stop	
9242 XSA2	9242 XSA4	8 STAINLESS STEEL hanger (with stainless steel wheels mounted on ball bearings, fixing bolt Ø M 14)	
66 XA2	66 XA4	11 STAINLESS STEEL plate (hole M 14)	
1110 XA2/6	1110 XA4/6	14 STAINLESS STEEL U-profile 30x30. 6 M long	
1110 GN		12 Nylon guide for U-profile 30x30	


ACCESSORY			
Item Nr	Fig.	Description	
1290 X	16	STAINLESS STEEL finger pull - 200 x 90 mm	



Fig. 1



Fig. 2



Fig. 3



Fig. 4



Fig. 5



Fig. 6



Fig. 7



Fig. 8



Fig. 9



Fig. 10

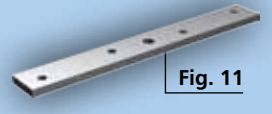


Fig. 11

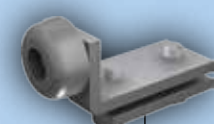


Fig. 12



Fig. 13

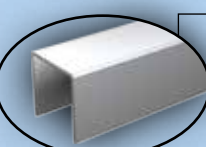


Fig. 14

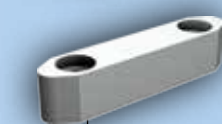
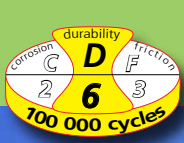


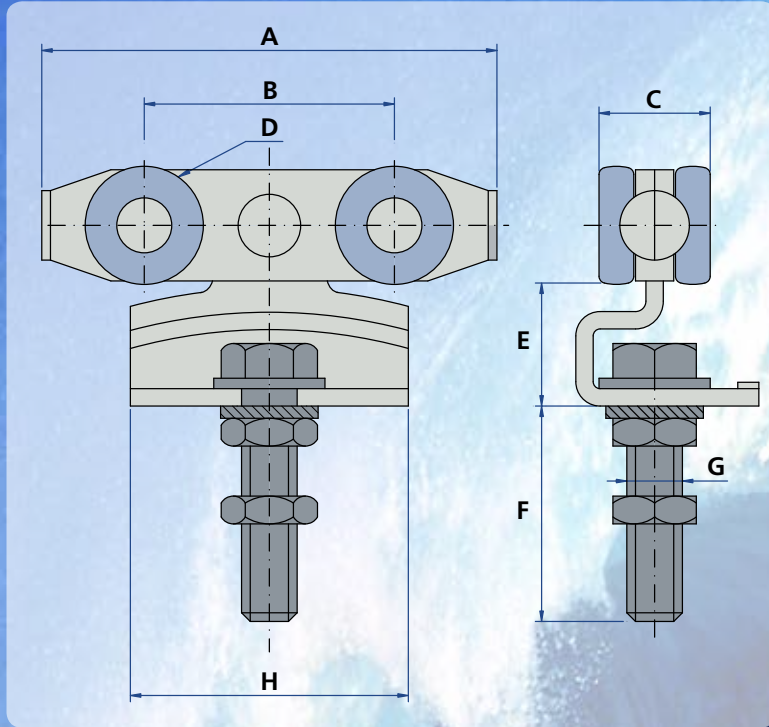
Fig. 15



Fig. 16



STAINLESS STEEL series



Item Nr	A	B	C	D	E	F	G	H
99212 XA2	87	49	20	23	26	50	M10	50
99212 XA4	87	49	20	23	26	50	M10	50
99232 XA2	89	53	25	28	30	63	M12	60
99232 XA4	89	53	25	28	30	63	M12	60
9232 XSA2	89	53	25	28	30	63	M12	60
9232 XSA4	89	53	25	28	30	63	M12	60
9242 XSA2	137	72	32	34	34	72	M14	80
9242 XSA4	137	72	32	34	34	72	M14	80

